

### DESCRIPTION

An economical differential switch utilizing a simple and reliable design. It is used for many monitoring applications such as a filter change indicator. Constructed of an anodized aluminium body with steel ports for durability.

### FEATURES

- Snap action micro switch
- Factory set or field adjustable
- Diaphragm design

### APPLICATIONS

- Filter element monitoring
- Fluid control
- Water treatment applications

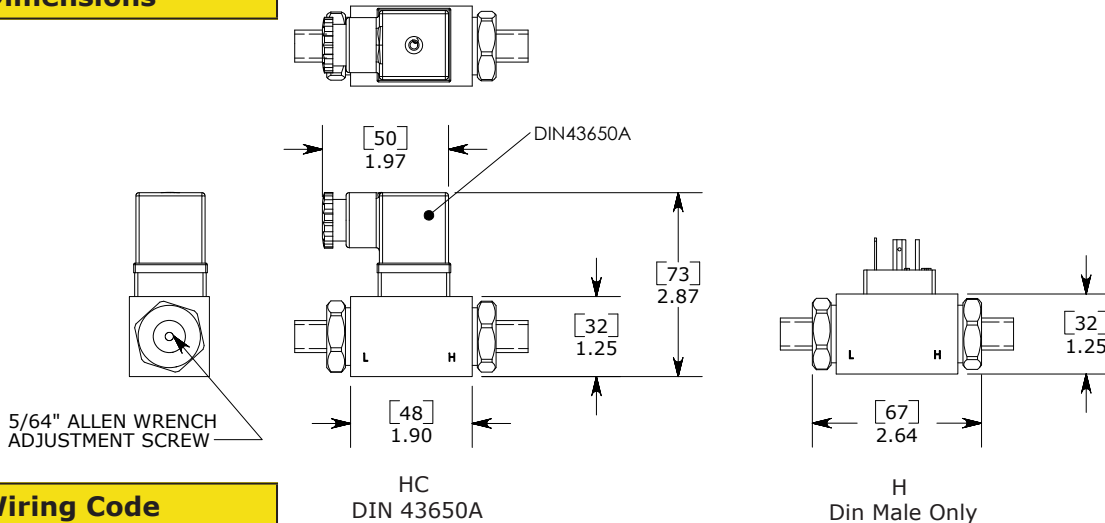
### Specifications

Electrical	5A [12/24 VDC, 125 VAC] or 3A [250 VAC]
Switch Type	Snap Action
Protection	DIN 43650A - IP65, Terminals - IP00
Temperature Range	-20°F to 180°F (-29°C to 82°C) Nitrile
Mechanical Range	1,000,000 Cycles @ 75 PSI (5.2 BAR)
Diaphragm Material	Standard: Nitrile Optional: Viton, EPDM, HNBR
Housing Material	Anodized Aluminum Housing
Maximum Overpressure	500 PSI (34 BAR)
Repeatability	+/- 2% of full set point range at 20°C (68°F)
Differential	10 - 30% of setting
Weight	0.75 lbs (0.35 kg)

### Pressure Range

Model	Adjustment Range	
	PSI	BAR
1	10 - 30	0.7 - 2.0
2	25 - 60	1.7 - 4.0

### Dimensions



### Wiring Code

CONTACT	DIN 43650 TYPE
COMMON	PIN 1
NORMALLY CLOSED	PIN 2
NORMALLY OPEN	PIN 3

## Ordering Information

**Field Adjustable**    **DSPA** - <sup>1</sup>**2** - <sup>2</sup>**4M-4M** - <sup>3</sup>**C** - <sup>4</sup>**HC** - <sup>5</sup>**1**

**Factory Preset**    **DSPF** - <sup>1</sup>**30F** - <sup>2</sup>**4M-4M** - <sup>3</sup>**C** - <sup>4</sup>**HC** - <sup>5</sup>**1**

### 1 - Pressure Selection:

Field Adjustable - Select Model Code

Insert set point value XXX followed by: R, F, BR, or BF

Model	Adjustment Range	
	PSI	BAR
<b>1</b>	10 - 30	0.7 - 2.0
<b>2</b>	25 - 60	1.7 - 4.0

OR

Set Point	Direction	Description
XXXX	<b>R</b>	PSI Rising Pressure
	<b>F</b>	PSI Falling Pressure
	<b>BR</b>	BAR Rising Pressure
	<b>BF</b>	BAR Falling Pressure

### 2 - Thread Options for both process connections:

- 4M** - 1/4 NPT male
- 4G** - 1/4 BSPP male, G1/4

### 3 - Circuit:

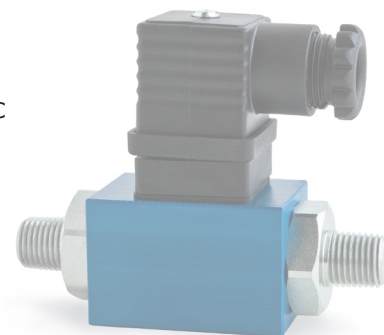
- C** - SPDT (Single Pole Double Throw : Normally Open and Normally Closed)

### 4 - Electrical Termination:

- H** - DIN 43650A - connector type - male half only (only available in SPDT option)
- HC** - DIN 43650A PG9/PG11 - connector type (only available in SPDT option)
- HN** - DIN 43650A 1/2" NPT Conduit (only available in SPDT option)

### 5 - Options:

- 1** - Viton® Diaphragm
- 2** - EPDM Diaphragm
- 4** - HNBR Diaphragm
- 7** - Gold Contact, Snap Action Microswitch @ 20 mA / 12 VDC
- 8** - 10 amp, Snap Action Microswitch @ 10(2) 125 VAC (inductive), 6(2) 250 VAC (inductive)



Note: Please see page 43 for other available options